

Citizenship, Personal, Social and Health Education (PSHE) and Relationships and Sex Education (RSE)

What the National Curriculum says...

| Statutory Information | Citizenship Programmes of Study |
|--|---|
| <p>Personal, social, health and economic education: Personal, social, health and economic (PSHE) education is an important and necessary part of all pupils' education. All schools should teach PSHE, drawing on good practice, and this expectation is outlined in the introduction to the proposed new national curriculum.</p> <p>PSHE is a non-statutory subject. To allow teachers the flexibility to deliver high-quality PSHE we consider it unnecessary to provide new standardised frameworks or programmes of study. PSHE can encompass many areas of study. Teachers are best placed to understand the needs of their pupils and do not need additional central prescription.</p> <p>However, while we believe that it is for schools to tailor their local PSHE programme to reflect the needs of their pupils, we expect schools to use their PSHE education programme to equip pupils with a sound understanding of risk and with the knowledge and skills necessary to make safe and informed decisions.</p> <p>Schools should seek to use PSHE education to build, where appropriate, on the statutory content already outlined in the national curriculum, the basic school curriculum and in statutory guidance on: drug education, financial education, sex and relationship education (SRE) and the importance of physical activity and diet for a healthy lifestyle.</p> <p>Relationships and sex education: Relationships and sex education (RSE) is an important part of PSHE education. Relationships education is compulsory for all primary school pupils, and relationships and sex education (RSE) is compulsory for all secondary school pupils.</p> | <p>Key Stage 1 During key stage 1 pupils learn about themselves as developing individuals and as members of their communities, building on their own experiences and on the early learning goals for personal, social and emotional development. They learn the basic rules and skills for keeping themselves healthy and safe and for behaving well. They have opportunities to show they can take some responsibility for themselves and their environment. They begin to learn about their own and other people's feelings and become aware of the views, needs and rights of other children and older people. As members of a class and school community, they learn social skills such as how to share, take turns, play, help others, resolve simple arguments and resist bullying. They begin to take an active part in the life of their school and its neighbourhood.</p> <p>Key Stage 2 During key stage 2 pupils learn about themselves as growing and changing individuals with their own experiences and ideas, and as members of their communities. They become more mature, independent and self-confident. They learn about the wider world and the interdependence of communities within it. They develop their sense of social justice and moral responsibility and begin to understand that their own choices and behaviour can affect local, national or global issues and political and social institutions. They learn how to take part more fully in school and community activities. As they begin to develop into young adults, they face the changes of puberty and transfer to secondary school with support and encouragement from their school. They learn how to make more confident and informed choices about their health and environment; to take more responsibility, individually and as a group, for their own learning; and to resist bullying.</p> |

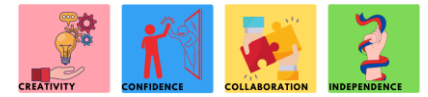
We believe a strong PSHE curriculum is core to school life; an engaging PSHE offer is instrumental in all areas of learning as the concepts entwined within it ensure that our children are safe, happy and well-being prioritised. Our PSHE Key Concepts have been thoughtfully crafted to ensure that children’s development of these throughout their time at St Buryan Academy are at the core of learning and that there are opportunities for children to build on these characteristics not just through our PSHE curriculum, but all areas of learning and life at our school.

Whilst we use Jigsaw PSHE as the basis of our curriculum, we supplement it with what we feel our children need. We also use ‘5 ways to well-being’ as a core principle within our school with strands from that concept (Be Active, Connect, Give, Keep Learning, Take Notice) evident throughout teaching and learning across our school curriculum. We use specialists in areas to enhance learning. For example, we have developed strong relationships with charities such as Man Down Cornwall, Your Voice Cornwall and Samaritans to enhance our well-being offer and work with Healthy Cornwall to strengthen our Healthy Lifestyle key concept, amongst others.

Jigsaw also supports our RSE curriculum, ensuring that we meet statutory requirements.

Although PSHE and RSE are taught as lessons in their own right, the knowledge and skills developed are evident across our curriculum so that children can relate these characteristics in all areas of life.





PSHE in Nursery

Personal and Social Health Education falls under the 'Understand the World' area of the EYFS framework. Understanding the world involves guiding children to make sense of their physical world and their community.

The frequency and range of children's personal experiences increases their knowledge and sense of the world around them – from visiting parks, libraries and museums to meeting important members of society such as police officers, nurses and firefighters.

In addition, listening to a broad selection of stories, non-fiction, rhymes and poems will foster their understanding of our culturally, socially, technologically and ecologically diverse world.

As well as building important knowledge, this extends their familiarity with words that support understanding across domains.

Enriching and widening children's vocabulary will support later reading comprehension.

We use the Jigsaw PSHE curriculum, which begins at three years old and is delivered as part of our nursery provision.

St Buryan Academy Coverage and Progression – Concept Map



| Age Group | Being Me In My World | Celebrating Difference | Dreams and Goals | Healthy Me | Relationships | Changing Me |
|-------------------------|---|---|---|---|---|---|
| Ages 3-5 (F1-F2) | Self-identity Understanding feelings Being in a classroom Being gentle Rights and responsibilities | Identifying talents Being special Families Where we live Making friends Standing up for yourself | Challenges Perseverance Goal-setting Overcoming obstacles Seeking help Jobs Achieving goals | Exercising bodies Physical activity Healthy food Sleep Keeping clean Safety | Family life Friendships Breaking friendships Falling out Dealing with bullying Being a good friend | Bodies Respecting my body Growing up Growth and change Fun and fears Celebrations |
| Ages 5-6 | Feeling special and safe Being part of a class Rights and responsibilities Rewards and feeling proud Consequences Owning the Learning Charter | Similarities and differences Understanding bullying and knowing how to deal with it Making new friends Celebrating the differences in everyone | Setting goals Identifying successes and achievements Learning styles Working well and celebrating achievement with a partner Tackling new challenges Identifying and overcoming obstacles Feelings of success | Keeping myself healthy Healthier lifestyle choices Keeping clean Being safe Medicine safety/safety with household items Road safety Linking health and happiness | Belonging to a family Making friends/being a good friend Physical contact preferences People who help us Qualities as a friend and person Self-acknowledgement Being a good friend to myself Celebrating special relationships | Life cycles – animal and human Changes in me Changes since being a baby Differences between female and male bodies (correct terminology) Linking growing and learning Coping with change Transition |
| Ages 6-7 | Hopes and fears for the year Rights and responsibilities Rewards and consequences Safe and fair learning environment Valuing contributions Choices Recognising feelings | Assumptions and stereotypes about gender Understanding bullying Standing up for self and others Making new friends Gender diversity Celebrating difference and remaining friends | Achieving realistic goals Perseverance Learning strengths Learning with others Group co-operation Contributing to and sharing success | Motivation Healthier choices Relaxation Healthy eating and nutrition Healthier snacks and sharing food | Different types of family Physical contact boundaries Friendship and conflict Secrets Trust and appreciation Expressing appreciation for special relationships | Life cycles in nature Growing from young to old Increasing independence Differences in female and male bodies (correct terminology) Assertiveness Preparing for transition |
| Ages 7-8 | Setting personal goals Self-identity and worth Positivity in challenges Rules, rights and responsibilities Rewards and consequences Responsible choices Seeing things from others' perspectives | Families and their differences Family conflict and how to manage it (child-centred) Witnessing bullying and how to solve it Recognising how words can be hurtful Giving and receiving compliments | Difficult challenges and achieving success Dreams and ambitions New challenges Motivation and enthusiasm Recognising and trying to overcome obstacles Evaluating learning processes Managing feelings Simple budgeting | Exercise Fitness challenges Food labelling and healthy swaps Attitudes towards drugs Keeping safe and why it's important online and off line scenarios Respect for myself and others Healthy and safe choices | Family roles and responsibilities Friendship and negotiation Keeping safe online and who to go to for help Being a global citizen Being aware of how my choices affect others Awareness of how other children have different lives Expressing appreciation for family and friends | How babies grow Understanding a baby's needs Outside body changes Inside body changes Family stereotypes Challenging my ideas Preparing for transition |

St Buryan Academy Coverage and Progression – Concept Map



| Age Group | Being Me In My World | Celebrating Difference | Dreams and Goals | Healthy Me | Relationships | Changing Me |
|-------------------|--|---|---|--|---|--|
| Ages 8-9 | Being part of a class team Being a school citizen Rights, responsibilities and democracy (school council) Rewards and consequences Group decision-making Having a voice What motivates behaviour | Challenging assumptions Judging by appearance Accepting self and others Understanding influences Understanding bullying Problem-solving Identifying how special and unique everyone is First impressions | Hopes and dreams Overcoming disappointment Creating new, realistic dreams Achieving goals Working in a group Celebrating contributions Resilience Positive attitudes | Healthier friendships Group dynamics Smoking Alcohol Assertiveness Peer pressure Celebrating inner strength | Jealousy Love and loss Memories of loved ones Getting on and Falling Out Girlfriends and boyfriends Showing appreciation to people and animals | Being unique Having a baby Girls and puberty Confidence in change Accepting change Preparing for transition Environmental change |
| Ages 9-10 | Planning the forthcoming year Being a citizen Rights and responsibilities Rewards and consequences How behaviour affects groups Democracy, having a voice, participating | Cultural differences and how they can cause conflict Racism Rumours and name-calling Types of bullying Material wealth and happiness Enjoying and respecting other cultures | Future dreams The importance of money Jobs and careers Dream job and how to get there Goals in different cultures Supporting others (charity) Motivation | Smoking, including vaping Alcohol Alcohol and anti-social behaviour Emergency aid Body image Relationships with food Healthy choices Motivation and behaviour | Self-recognition and self-worth Building self-esteem Safer online communities Rights and responsibilities online Online gaming and gambling Reducing screen time Dangers of online grooming SMARRT internet safety rules | Self- and body image Influence of online and media on body image Puberty for girls Puberty for boys Conception (including IVF) Growing responsibility Coping with change Preparing for transition |
| Ages 10-11 | Identifying goals for the year Global citizenship Children's universal rights Feeling welcome and valued Choices, consequences and rewards Group dynamics Democracy, having a voice Anti-social behaviour Role-modelling | Perceptions of normality Understanding disability Power struggles Understanding bullying Inclusion/exclusion Differences as conflict, difference as celebration Empathy | Personal learning goals, in and out of school Success criteria Emotions in success Making a difference in the world Motivation Recognising achievements Compliments | Taking personal responsibility How substances affect the body Exploitation, including 'county lines' and gang culture Emotional and mental health Managing stress | Mental health Identifying mental health worries and sources of support Love and loss Managing feelings Power and control Assertiveness Technology safety Take responsibility with technology use | Self-image Body image Puberty and feelings Conception to birth Reflections about change Physical attraction Respect and consent Boyfriends/girlfriends Sexting Transition |